

# Start of the Ice Wall Construction

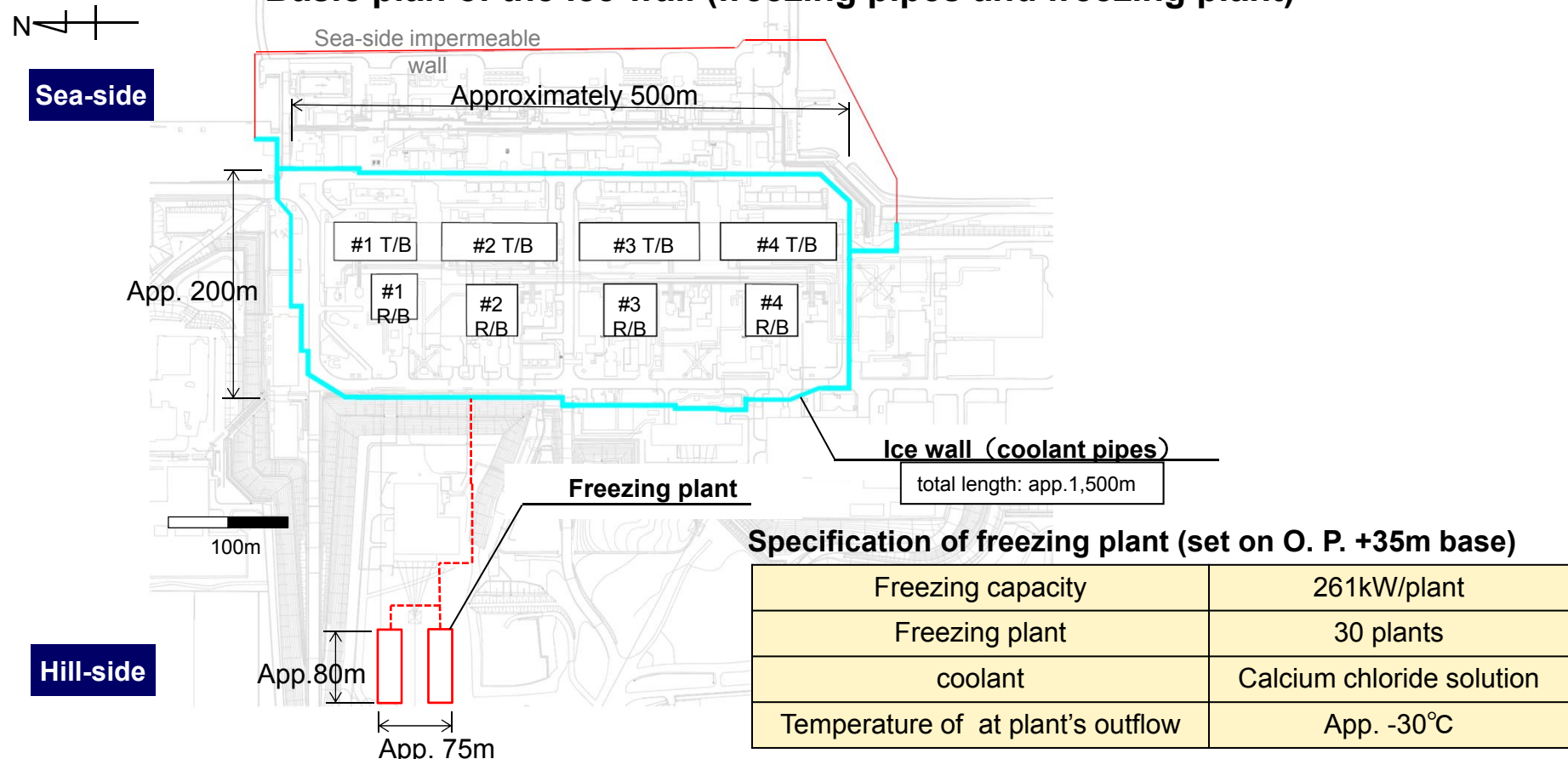
<reference>

May, 30 2014

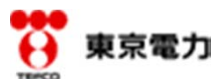
Tokyo Electric Power Company

- Installing casings of boring (outer pipe) and implanting freezing pipes to places excluding underground piping penetrating areas, part of the construction of the ice wall, has been started on June 2, 2014.

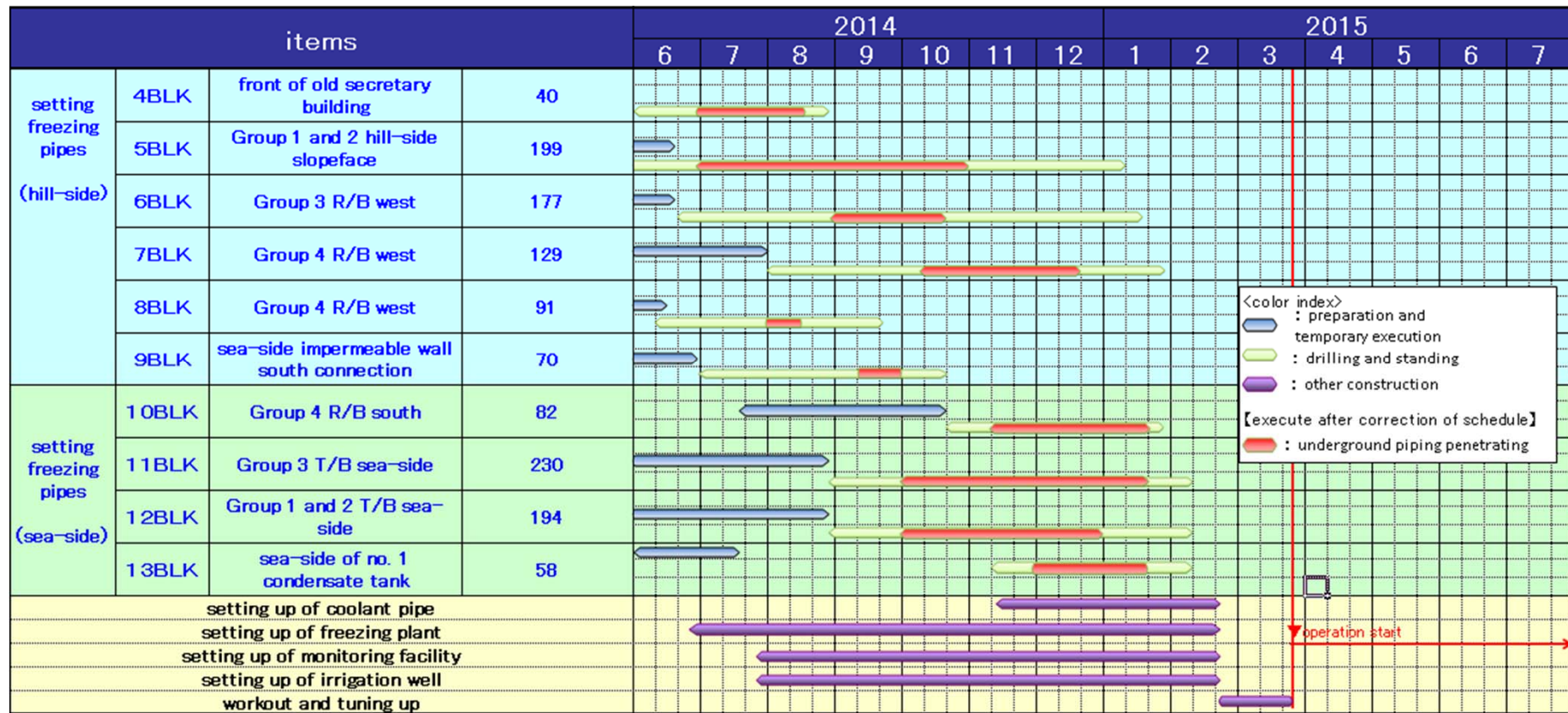
## Basic plan of the ice wall (freezing pipes and freezing plant)



We cool coolant to about -30C in freezing plant, which runs into every freezing pipe through coolant pipes, and make the ice wall. After circulation, return warm coolant to freezing plant and cool again.



# Building Process of Ice Wall



\*The number of pipe is temporary, and may be subject to change depend on the environment.

# Building process of Frozen pipes

- Set frozen pipes in the ground, and connect coolant pipe circulating coolant about -30 °C.

